



KEY FEATURES

- ID Mount configuration
- Precision linear guides
- Helical gear driven spindles
- Flanged spindle for 4", 6", 12" cutting spindles

DESCRIPTION

A casing drilling unit for offshore decommissioning. Designed to drill two holes simultaneously from the inside of the casing.

APPLICATIONS

Often used in conjunction with the band saw to provide a comprehensive decommissioning solution when drilling and cutting and pipelines, conductors, caissons and multiple grouted strings.

SPECIFICATIONS

Minimum Clamping Diameter	1016mm	40"
Maximum Clamping Diameter	1270mm	50"
Min – Max pin diameters	100mm (4")	305mm (12")
Cutting Stroke	400mm	15.7"
RPM Min Max	2	38
Recommended RPM per cutter	20 rpm recording a 35bar pressure on the HDCP-11 control	
Max Hydraulic Power @ 95 bar	8.4 hp	6.26 kw
Hydraulic Supply required for max power x 2 spindles	50L/min	13 Gal/min

FEED RATE

Auto Feed rate per revolution	4mm	0.157"
Recommended Auto Feed Rate mm/min	1.3mm/min recording a 6bar pressure on the HDCP-11 control	

INCLUDED AS STANDARD WITH MACHINE

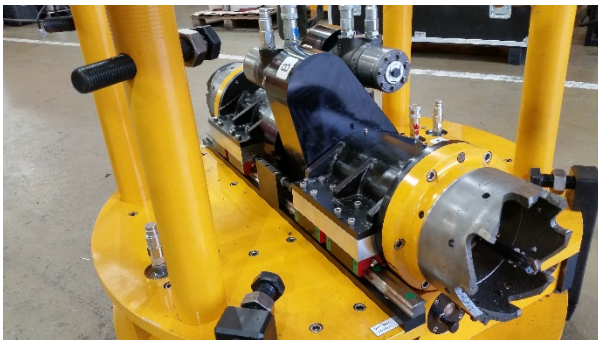
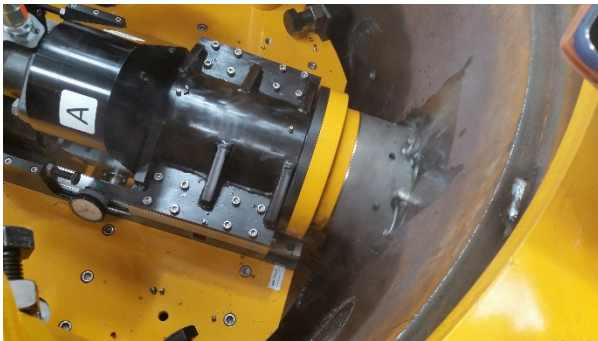
The machine is supplied complete with the following items;

- ✓ Toolkit
- ✓ All required mounting legs and connections
- ✓ Storage / shipping box
- ✓ CE certificate,
- ✓ Packing list and manual

SET UP AND OPERATION

The operator must be:

- Trained and conversant with the product
- Able to identify the correct and incorrect use of static or portable machines.
- Comply with all local and internationally recognised safe use of powered machines.



MACHINE WEIGHT

980 kg

2160 lb

SHIPPING WEIGHT

1029 kg

2269 lb

SHIPPING DIMENSIONS

Length	Width	Height
167cm (65.7")	167cm (65.7")	146cm (57.4")